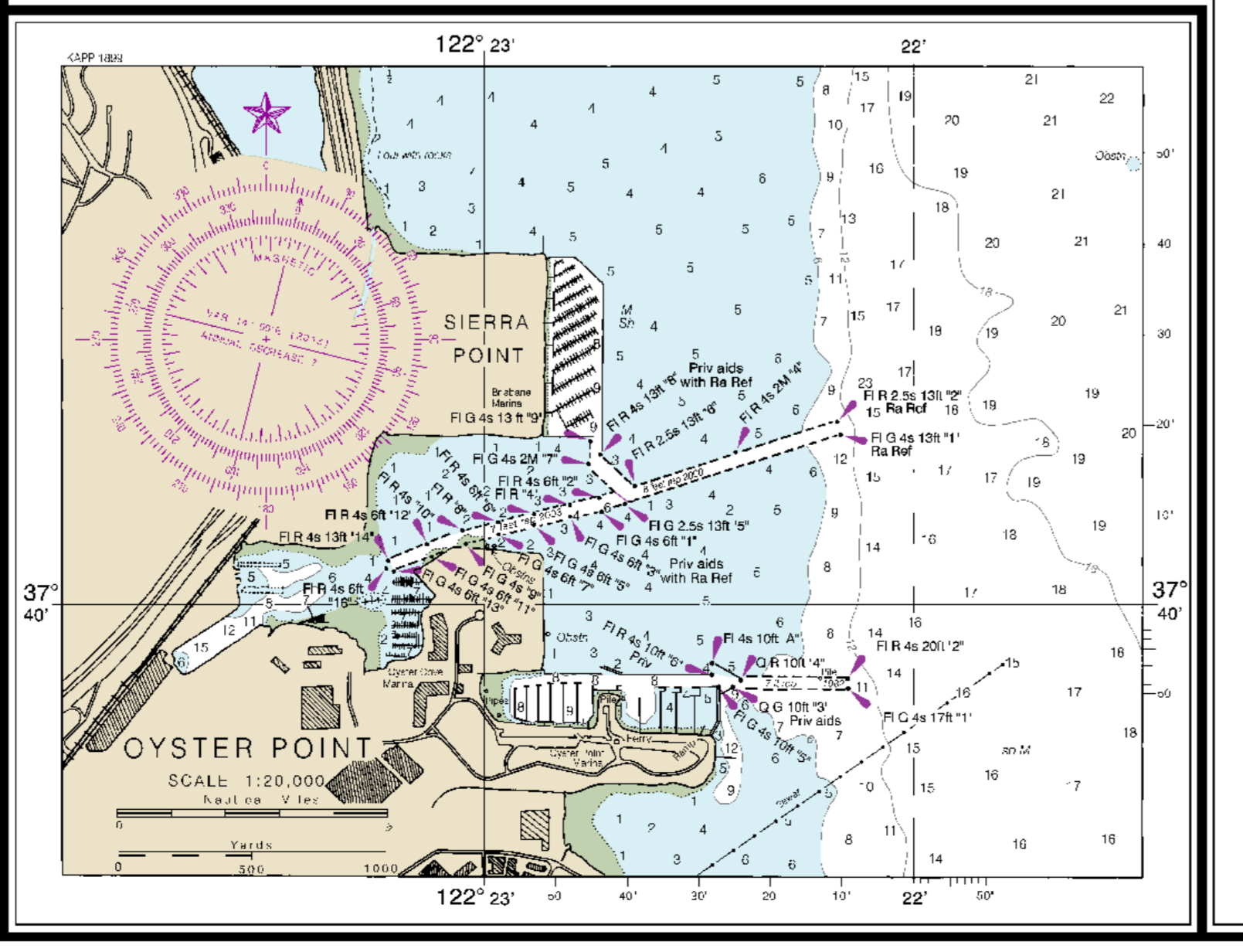
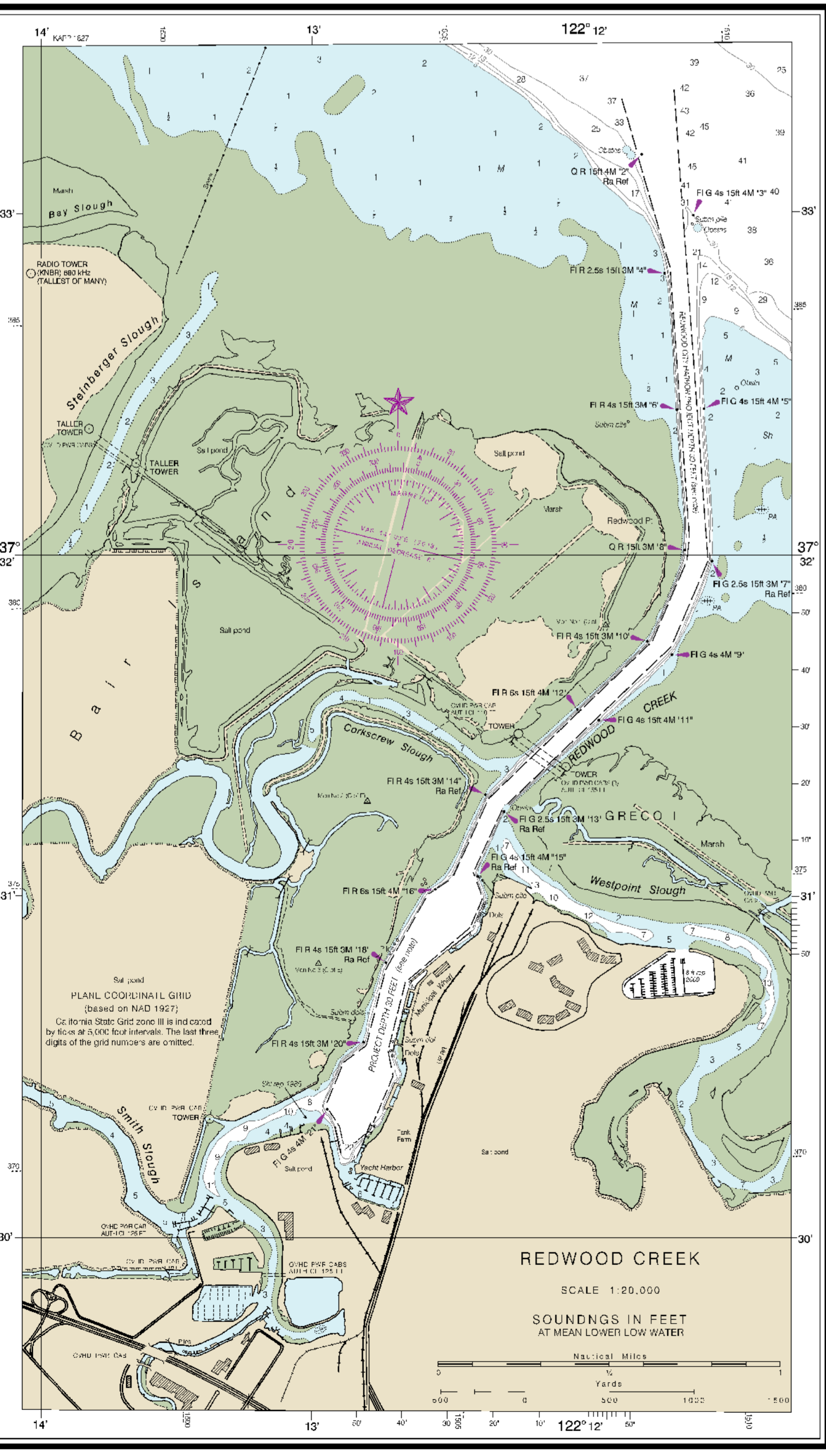


SCALE 1:40,000
 UNITED STATES - WEST COAST
 CALIFORNIA
SAN FRANCISCO BAY
 SOUTHERN PART
 Mercator Projection
 Scale 1:40,000 at Lat. 37°35'
 North American Datum of 1983
 World Geodetic System 1984
SOUNDINGS IN FEET
 AT MEAN LOWER LOW WATER
 Additional information can be obtained at each Coast Guard Vessel Guide.

AID NO.	AID NAME	AID CHARACTER	ELEVATION IN FEET (AS OF DATE)	
			AS BUILT	AS OF DATE
101	Redwood Pt. Light	Fl. R. 100	100	100
102	Pal Alto Light	Fl. R. 100	100	100
103	Hayward Pt. Light	Fl. R. 100	100	100
104	San Mateo Pt. Light	Fl. R. 100	100	100
105	San Francisco Pt. Light	Fl. R. 100	100	100

ABBREVIATIONS - For abbreviations of names of aids to navigation, see Chart No. 11.
 For abbreviations of names of aids to navigation, see Chart No. 11.
COAST GUARD VESSEL GUIDE
 For information on the location and characteristics of aids to navigation, see the Coast Guard Vessel Guide.
COAST GUARD VESSEL GUIDE
 For information on the location and characteristics of aids to navigation, see the Coast Guard Vessel Guide.
COAST GUARD VESSEL GUIDE
 For information on the location and characteristics of aids to navigation, see the Coast Guard Vessel Guide.



18651
 This chart is canceled. No new editions will be issued.
 U.S. DEPARTMENT OF COMMERCE
 NATIONAL OCEANIC AND ATMOSPHERIC ADMINISTRATION
 NATIONAL COAST SERVICE
 COAST SURVEY

18651
 San Francisco Bay, Southern Part
 SOUNDINGS IN FEET - SCALE 1:40,000